

## STRAIGHT ROLLERS



- Capabilities: 9" to 120" BF length
- Grooving: up to 78" in length
- OD's: 1", 1.375, 1.50, 1.75, 1.90, 2.50
- Chain Driven Live Rollers
- Tubing Materials:
  - Galvanized, raw steel, stainless steel, PVC
- Axles Material: C1018 steel
- Coating:
  - Urethane, vinyl, UHMW

- Material: galvanized 14 gauge 2.50 tubing
- Capabilities: 2.50-1.688 tapered rollers
  - Sizes in BF: 21, 22, 27, 28, 33, 34"
- Coating:
  - Urethane, vinyl, UHMW
- Any size can be made to order!

## TAPERED ROLLERS



## CONVEYOR BEARINGS



- Anti-static polypropylene encapsulated ABEC bearings
- Underground commercial bearings
- Stainless Steel bearings
- Poly V bearings
- Metal-cupped ABEC bearings

- Material Tubing:
  - DOM, ERW Tube, Stainless Steel, Aluminum
- Shafting: C1018, C1045, or made to order
- Lagging available:
  - Please advise type, thickness, and hardness
- Pulley types:
  - Drive • Crowned • Drum • Flat Faced
  - Dead • Trapezoid • Bow tie • Return/Tail
- Bearings, etc:
  - ER, Cylindrical, Weld-on hubs, QD Bushings

## PULLEYS



**We are proud to serve industries such as:**

- Food / Beverage
- E commerce
- Parcel
- DC / Warehouse
- Automotive
- Corrugated
- Steel Industry
- Airline Industry
- Wood / Forestry

## ROLLER WORKSHEET FOR QUOTATION

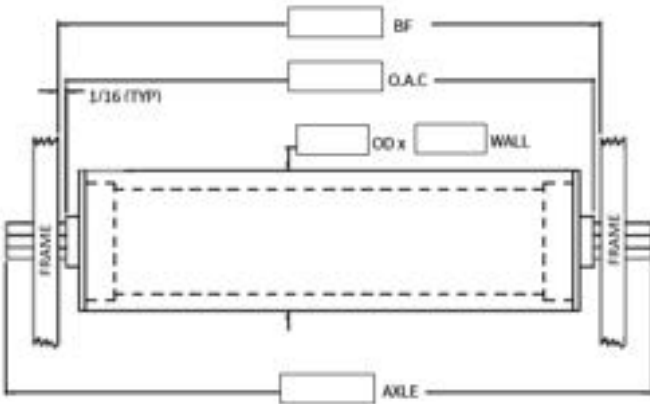
Company:  
 Contact:  
 Phone:  
 Solve Sales Contact:

Quotation Due:  
 Email:

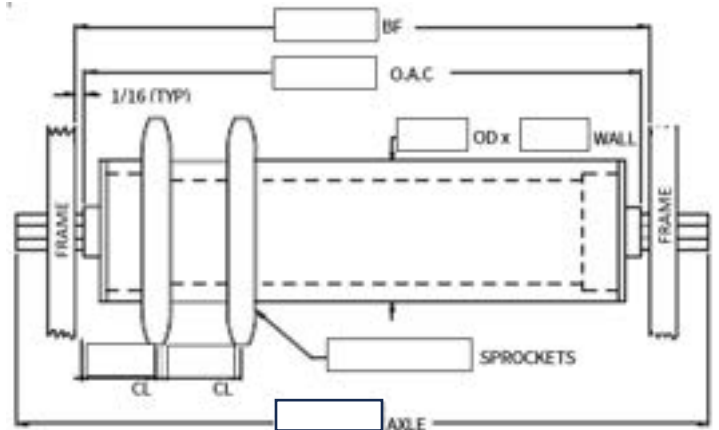
Date:  
 Desired Delivery:  
 Quote Number:

Quantity:  
 Between Frame Width:  
 Overall Cone (OAC):  
 Roller Diameter:  
 Wall Thickness:  
 Axle Size: (Hex or Round)  
 Axle Length:

Type of Bearing:  
 Pin Retained:  
 Spring Retained:  
 Groove Center Line:  
 Sprocket Size:  
 Load Capacity Required:



**GRAVITY ROLLER**



**GROOVED ROLLER**

**SPROCKETED ROLLER**

